

# Cairnhill 16

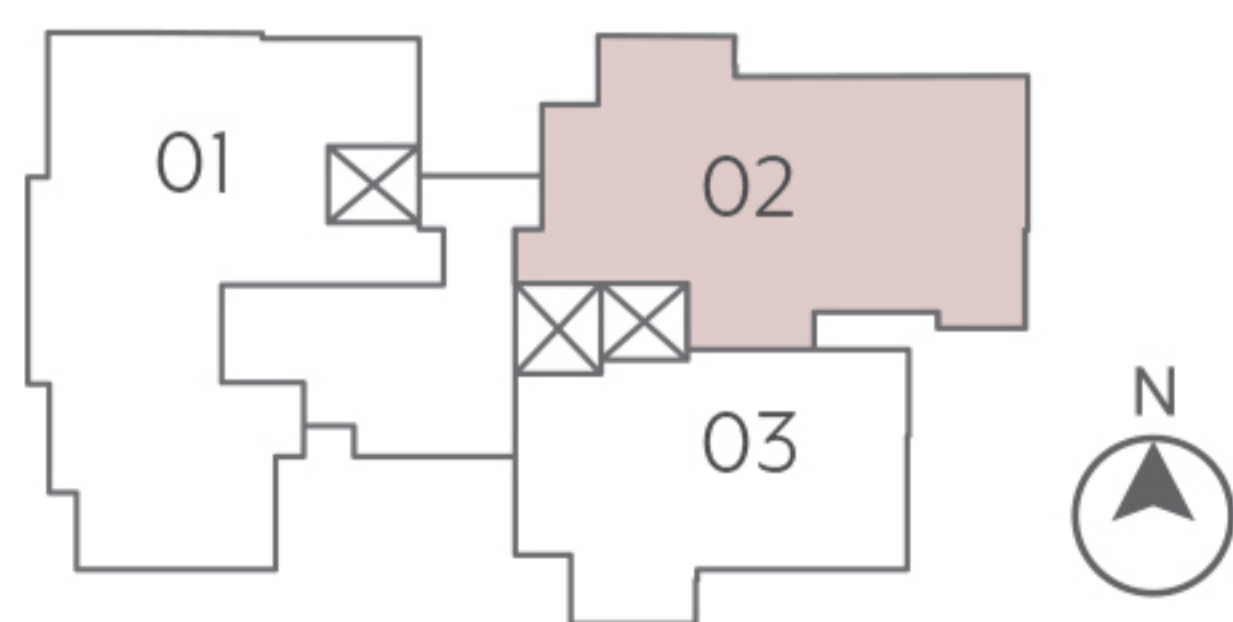
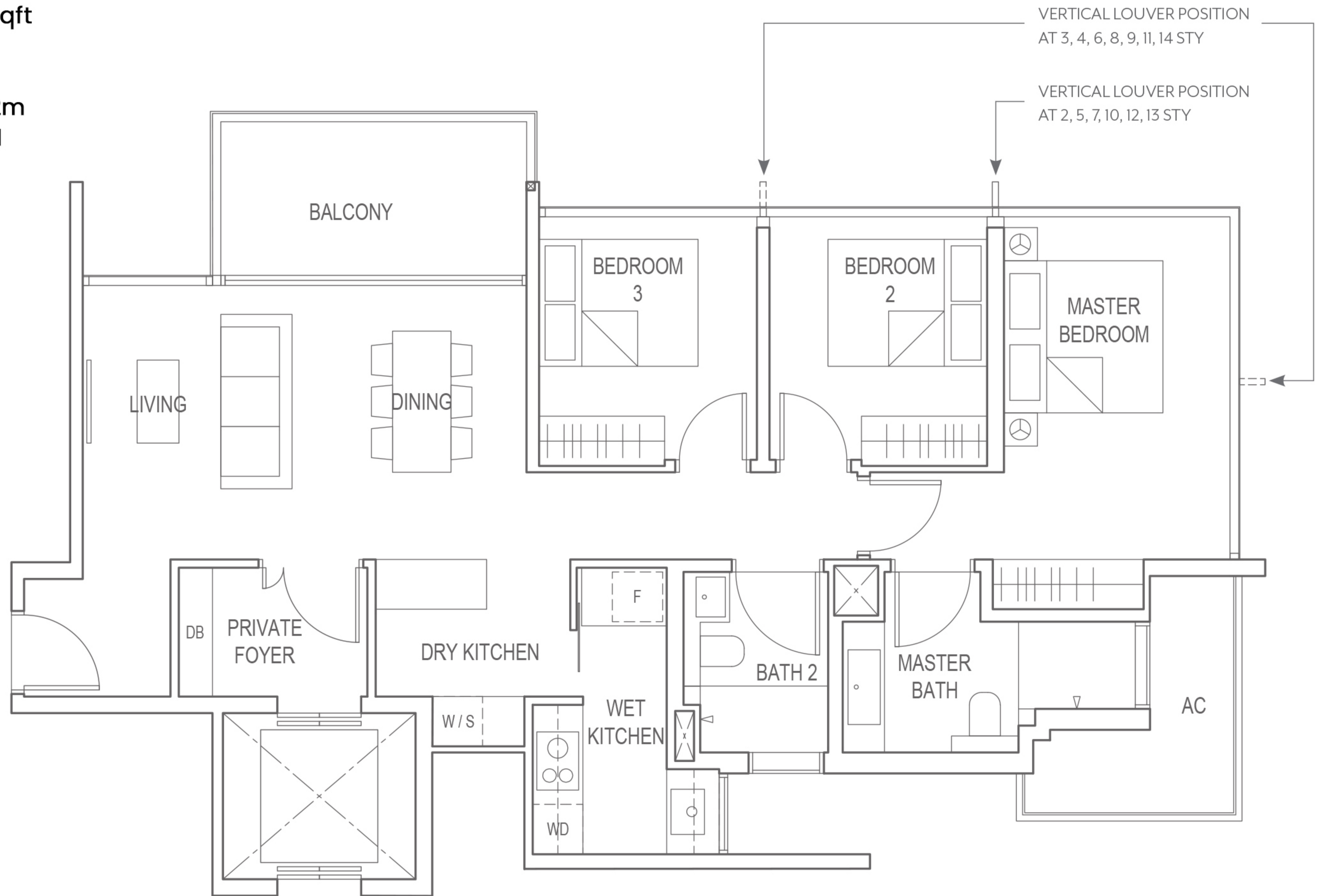
## 3-BEDROOM + STUDY

120 sq m / 1292 sqft

TYPE CS

Clear Ceiling: 3.2m

#02-01 to #10-01



**LEGEND:**

- |                   |                         |                  |
|-------------------|-------------------------|------------------|
| AC - Aircon Ledge | DB - Distribution Board | S - Steamer      |
| F - Fridge        | WD - Washer Cum Dryer   | W - Wine Chiller |



Drawn to Scale 1:100

The balcony in the unit shall not be enclosed unless with the approved balcony screen. For illustration of the approved balcony screen, please refer to the diagram annexed hereto as "Annexure 1" in this brochure. All plans are subject to change as may be required or approved by the relevant authorities. Indicated floor areas are approximate measurements and are subject to final survey.